

National Index on Agri-Food Performance

September 16, 2020



LEADING.
LEARNING.
SINCE 1913.

CAAIN OVERVIEW

The Canadian Agri-Food Automation and Intelligence Network (CAAIN) **brings together technology and agri-food companies** focused on creating and integrating automated and digitized solutions in Canada's agri-food sector.



CAAIN

Canadian Agri-Food Automation
and Intelligence Network 

connect. create. cultivate.



CAAIN CORE PROJECT AREAS:



1. Smart farming: precision ag technology, data analytics
2. Automation and robotics: enhancing productivity
3. Data integration and analytics: AI and predictive models
4. Sustainability, traceability and producer premiums





SUSTAINABLE AGRIFOOD TRACEABILITY PLATFORM (SAFT)

 FARMLEAD

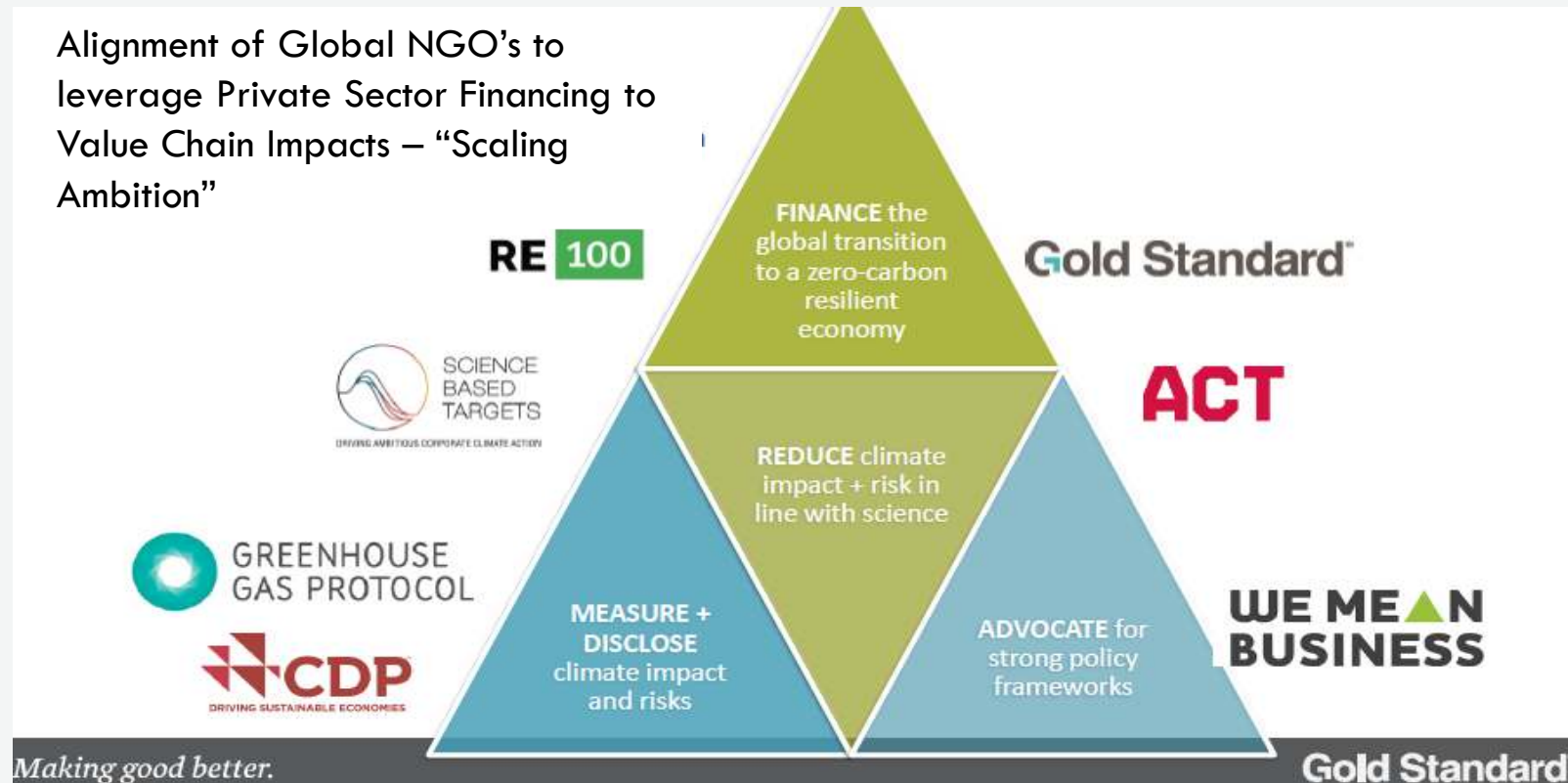
Lakeland
COLLEGE

TRUST
BIX

 iresco Solutions
End-to-end sustainability

CURRENT SITUATION: CORPORATE SUSTAINABILITY INITIATIVES

Alignment of Global NGO's to leverage Private Sector Financing to Value Chain Impacts – “Scaling Ambition”



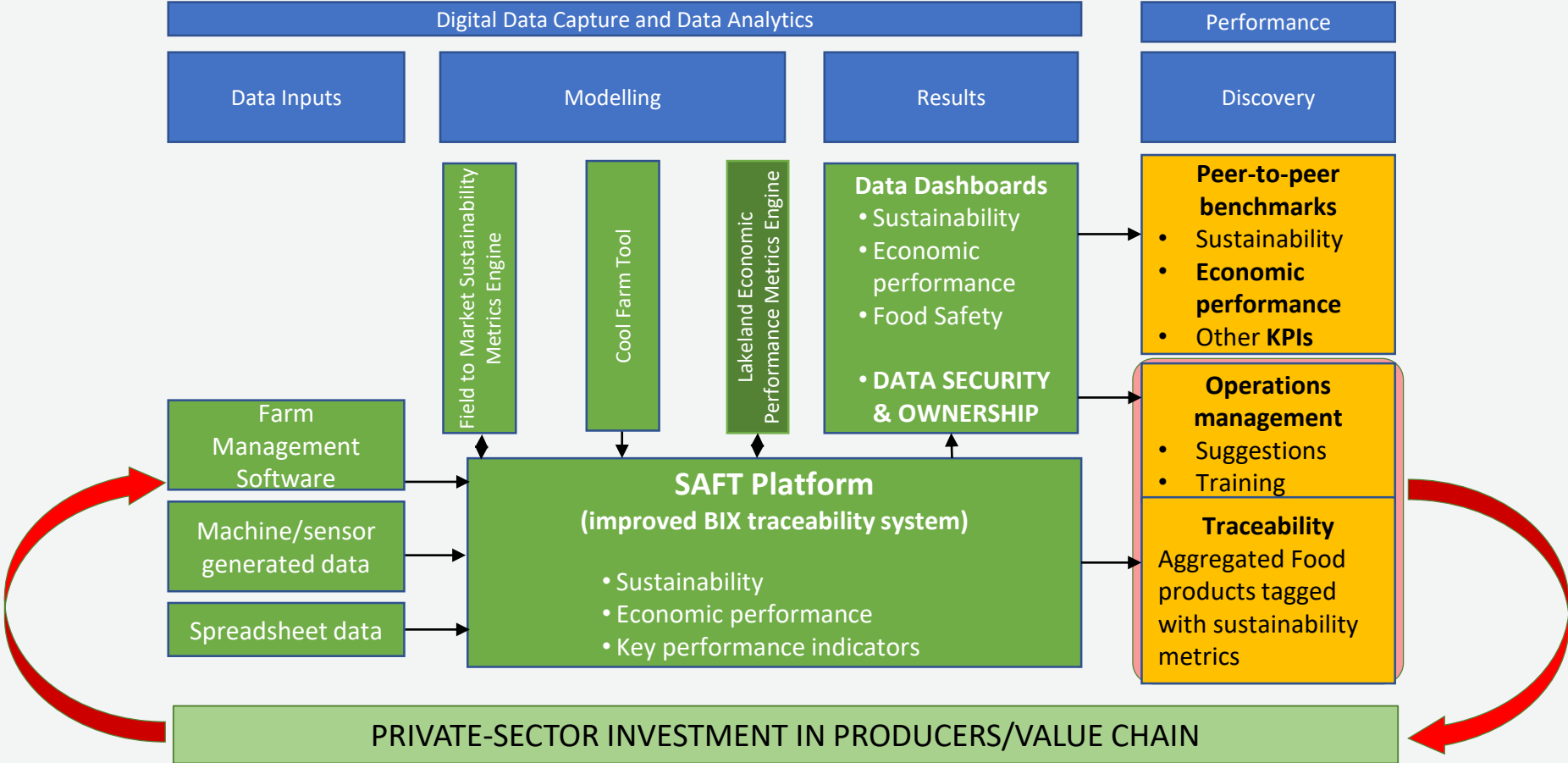
- Aggressive Value Chain Targets affecting Farms and Ranches being set by (with more coming on);



- Opportunity to scale investment and Farm actions with the right Platform

- **MARKET ACCESS ADVANTAGE...**
 - To whoever can demonstrate compliance

Framework Technical Architecture



THE SAFT PROJECT WILL.....

Utilize Canadian Sustainability Protocols and Metrics

Modify Sustainability Calculators for the Canadian Market

Integrate Farm Management Systems and Sensor Data into the SAFT Platform

Engage Agri-food Producers and Processors to Adopt Sustainability Best Practices

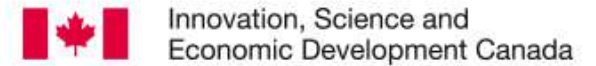
Capture Producer and Processor Data and Track that Data Along the Supply Chain

Generate Dashboards and Reports to Include Permissioned Peer-to-Peer Benchmarking

Improve Operations for Stakeholders Across the Supply Chain


Monetize Sustainability Interventions Across the Supply Chain

SAFT PARTNERS



FUNCTIONING EXAMPLE

CANADIAN BEEF SUSTAINABILITY ACCELERATION PILOT

An initiative led by 

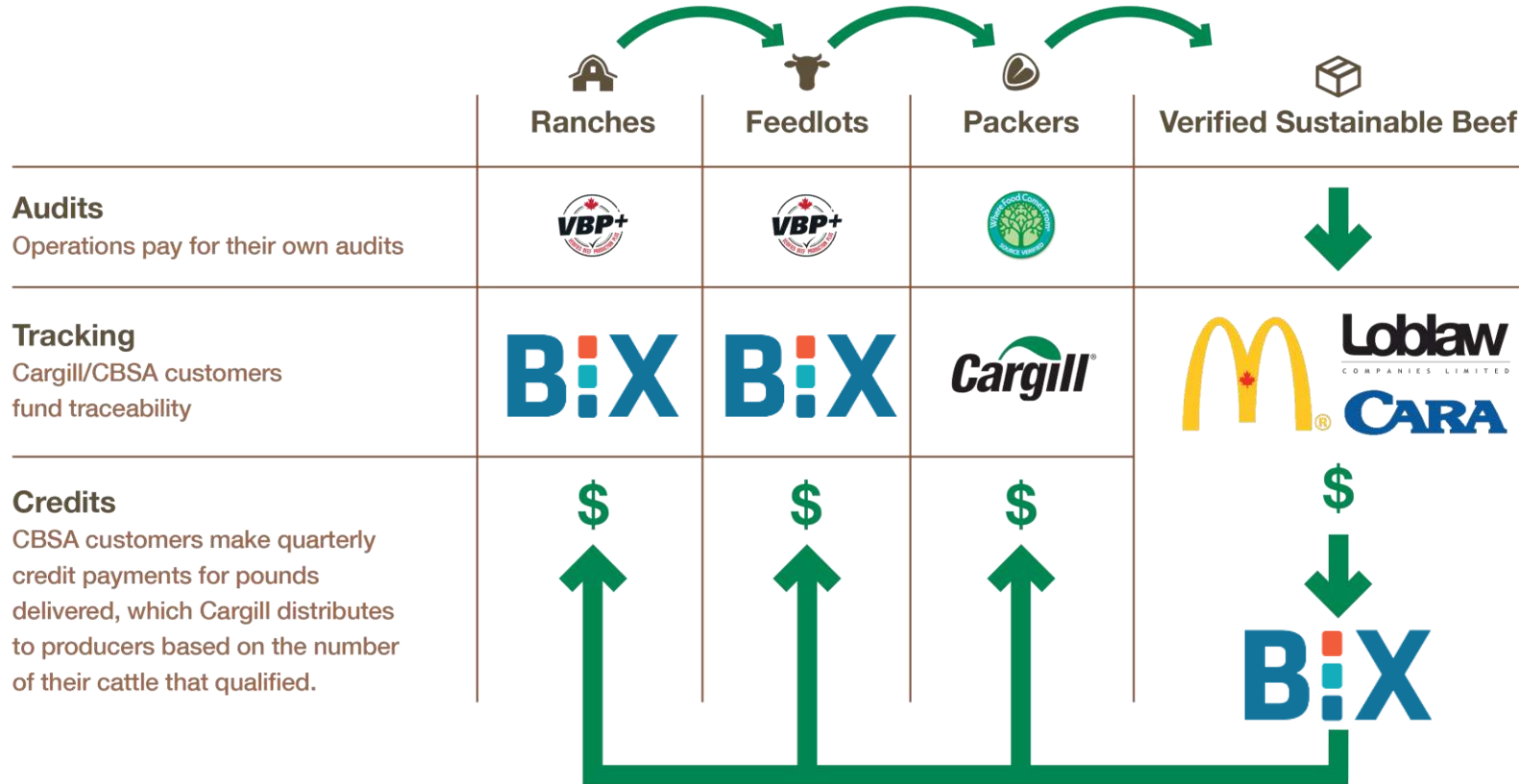


The logo for BIXS (Beef InfoExchange System) consists of the letters "BIXS" in a bold, sans-serif font, with a horizontal line underneath and the text "BEEF INFOEXCHANGE SYSTEM" in smaller letters below that.



Example of a Functioning Program— Incentives for Sustainable Production

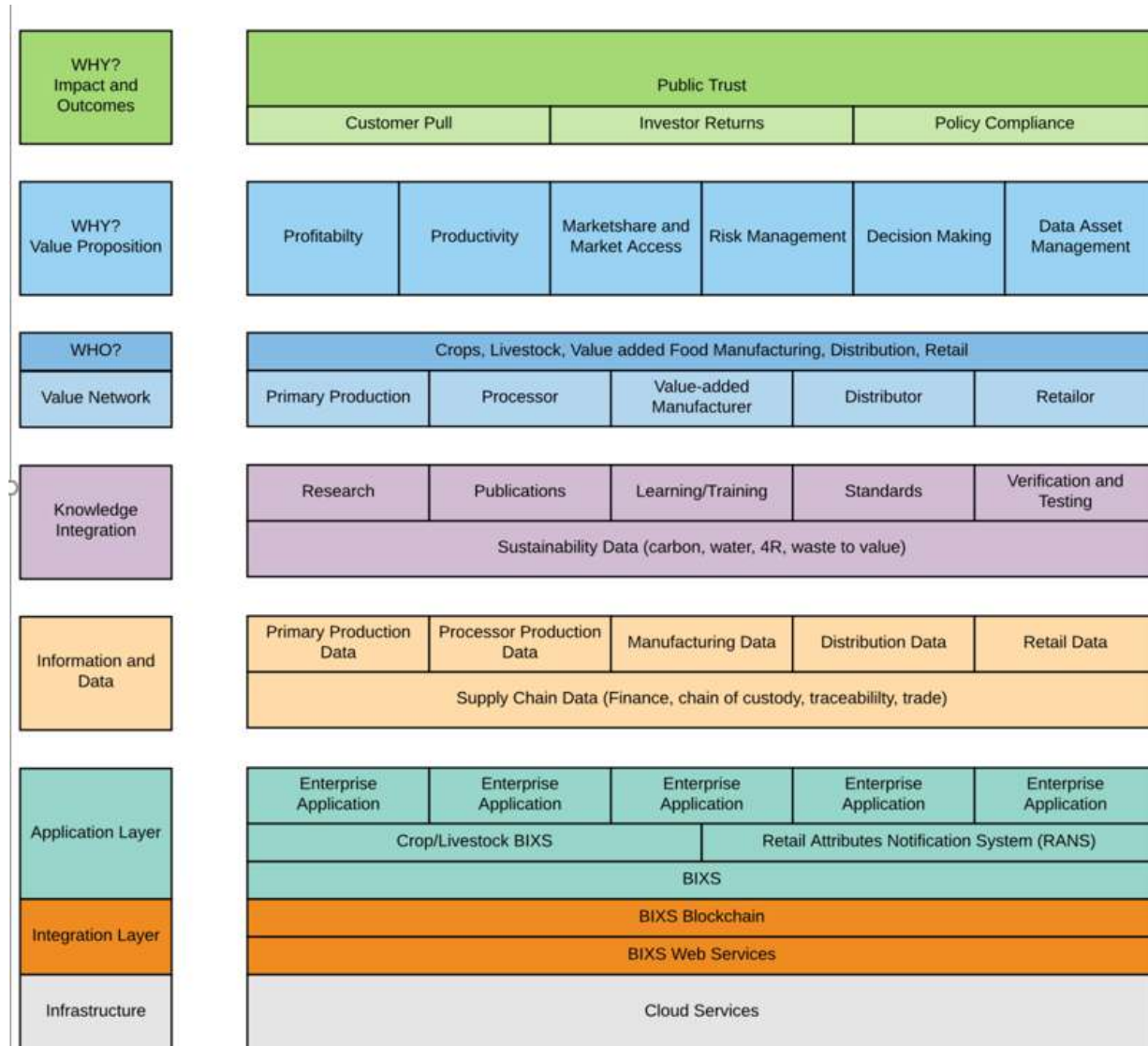




Certified Sustainable- Mass Balance



Farm to Fork Data Hub Collaboration



Opportunities for Collaboration

Input of
sustainability
metrics

API integration

Data integration

Academic
research network
participation

Support to
individual steps
of the SAFT build

Development of
BMPs

Questions?

Michael Crowe

VP, Academic and Research

Lakeland College

Michael.crowe@lakelandcollege.ca

Lakeland
COLLEGE

LEADING.
LEARNING.
SINCE 1913.