



Economic and Environmental Accounts: Value Chain Linkage to a National Index on Agri-Food

Panel Discussion on National Index on Agri-Food Performance
September 16, 2020

Delivering insight through data, for a better Canada

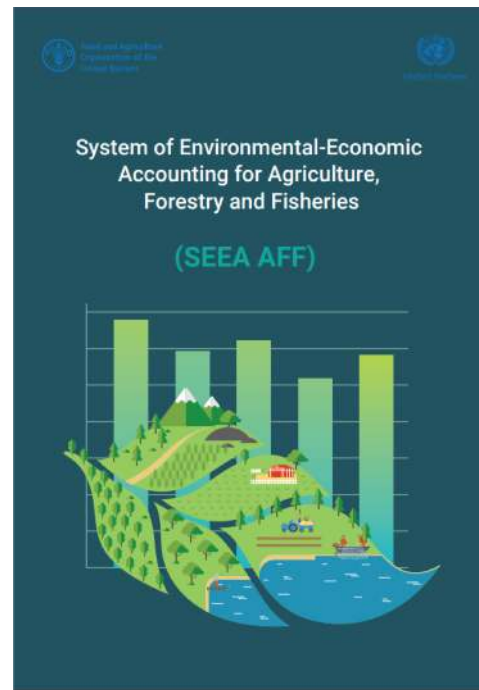
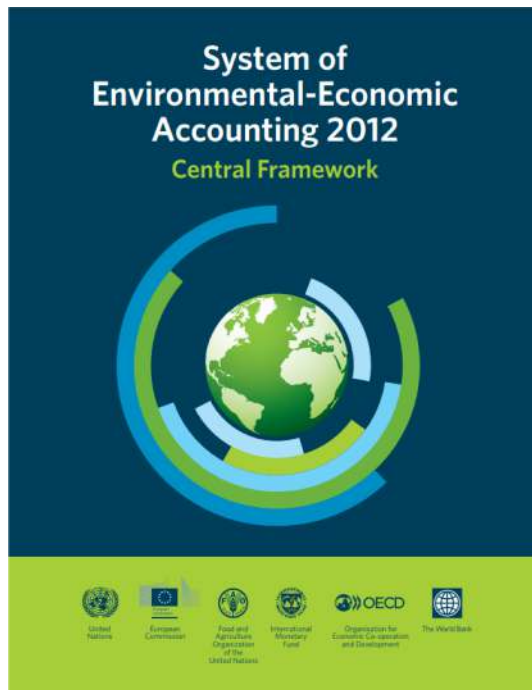


Statistics
Canada

Statistique
Canada

Canada

International frameworks already exist to link the economy and the environment



Designed to be compatible with how economic information is structured, the SEEA measures the **impact of the economy on the environment.**

Start with the economy

Agriculture and Agri-Food Economic Account (AAEA)

- Highlights value-chain relationships
- Highlights production, intermediate uses of good and services and value-added by industry
- Expanded industry classification to provide more detail on various parts of the sector



Soybean farming



Canola farming



Wheat farming



Grain farming



Oilseed (except soybean and canola) and pulse farming



Potato farming

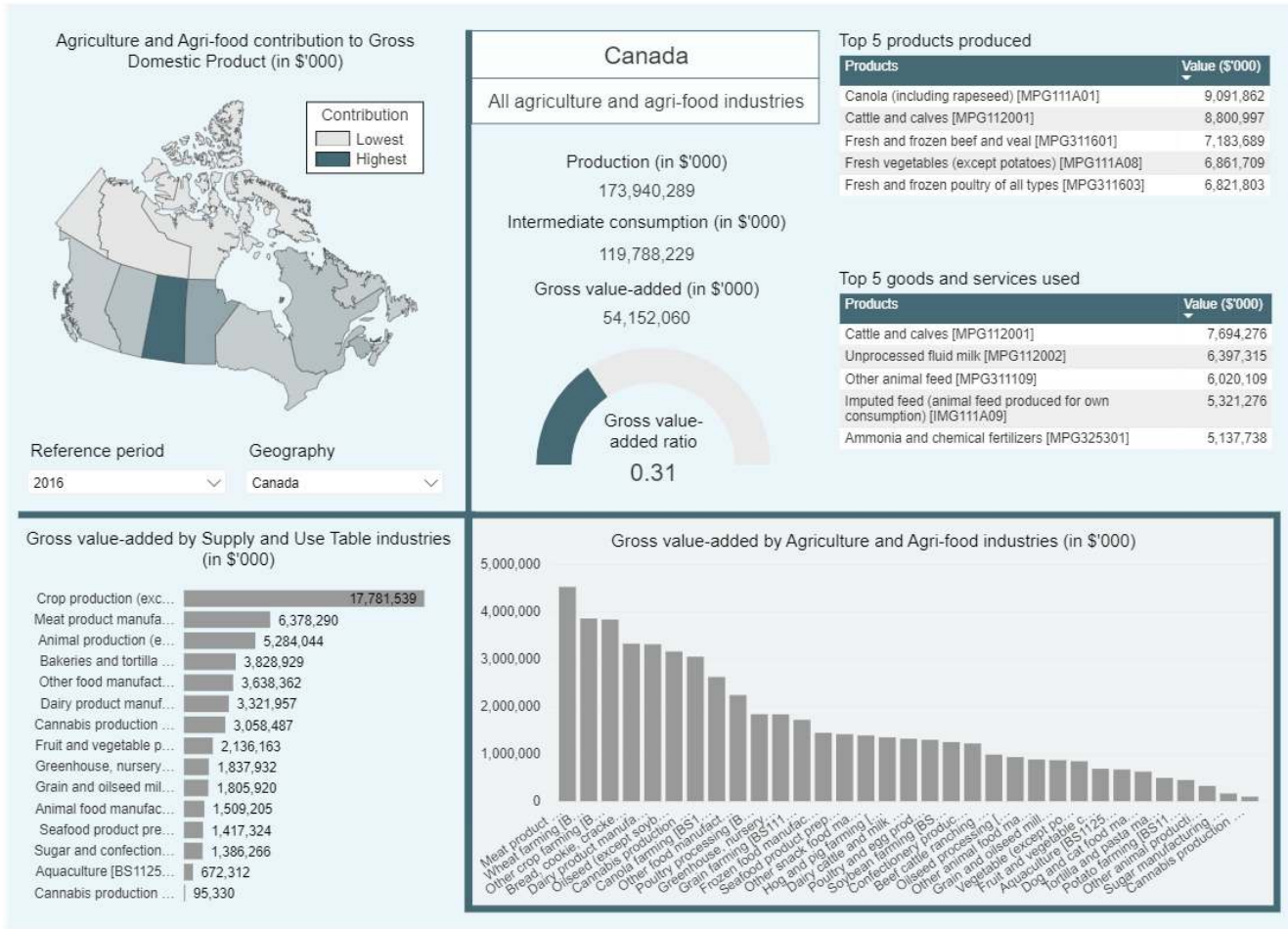


Vegetable (except potato), melon, fruit and tree nut farming



Other crop farming

These structural data can be dashboarded



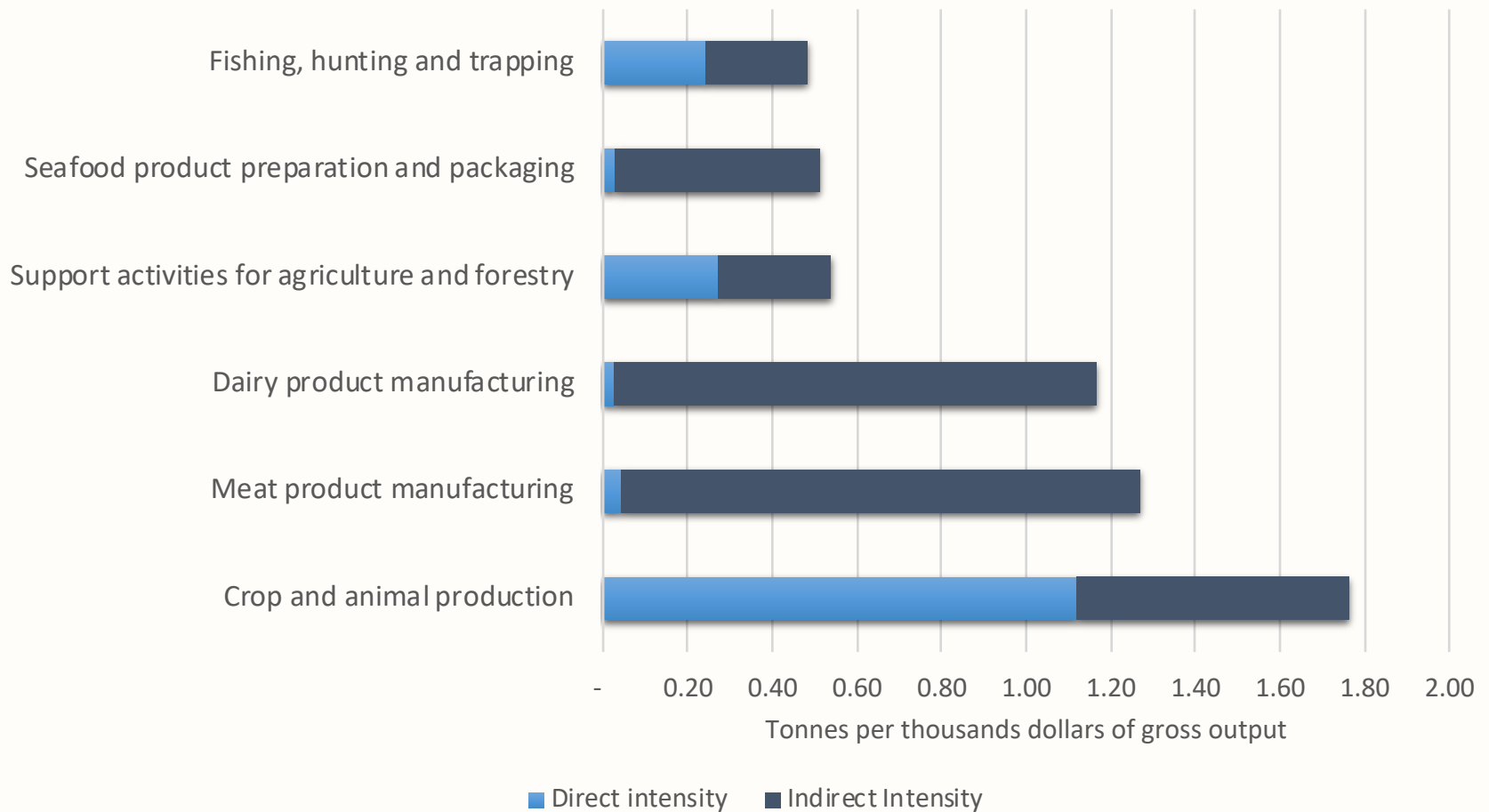
<https://www150.statcan.gc.ca/n1/pub/71-607-x/71-607-x2020007-eng.htm>

Adding the environmental component – linking the AAEA to the SEEA physical flow accounts (PFA)

- The PFA include a wealth of data regarding upstream and downstream production of goods including energy and water used to create a given product, and GHG emissions
- The PFA provide:
 - Information by sector
 - Embedded physical amounts necessary for the production of a particular commodity
 - Final demand for products (e.g., households or exports)
- Information specific to the agriculture and agri-food sector can be created by linking these accounts to the AAEA



GHG intensities for industries related to agriculture and food (direct plus indirect), 2016



Concluding thoughts

During the August 27th Webinar key challenges associated with benchmarking and establishing an index were identified by partners such as :

- A need to align with international standards
- Highlighting the impact of agricultural value-chains
- The need for a convener and integrator of various sources of data
- Consistency in data collection and reporting